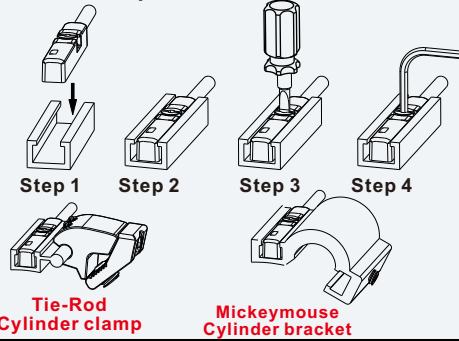


Plastic injection molding. Strong structure



AL-37 Series can replace AL-30, 31, 35, 36, 39 Series

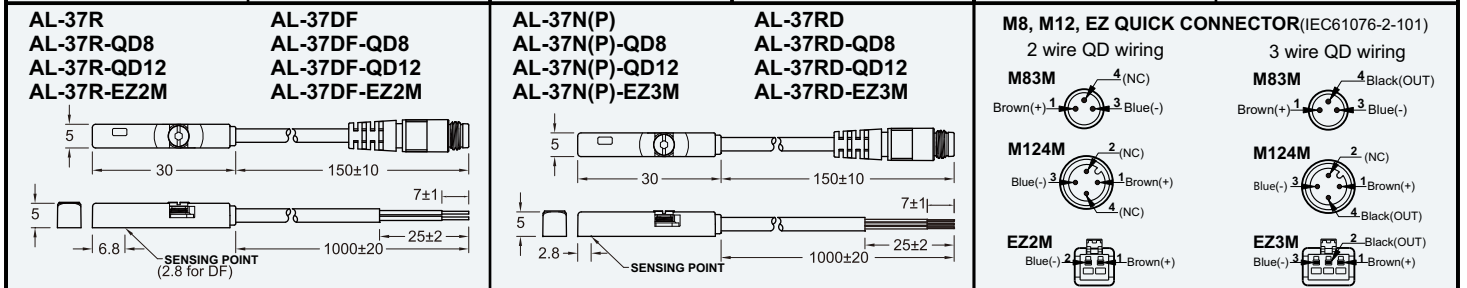
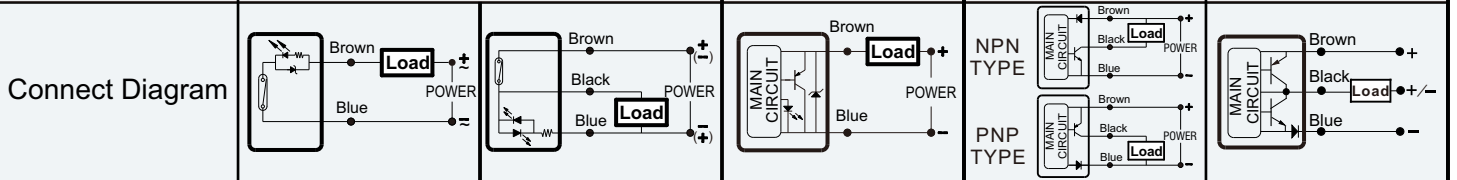
**FOR ALL T SLOTS
(FESTO, SMC, Parker, etc.)**



**Bracket instructions
See Page 72**

SPECIFICATION

TYPE	AL - 37R	AL - 37RD	AL - 37DF	AL - 37N(P)	AL - 37S
CHARACTERISTIC					
SWITCHING LOGIC	SPST Normally Open	SPST Normally Open	Normally Open	Solid State Output, Normally Open	
SENSOR TYPE	Reed Switch	Reed Switch	2 Wire Solid State	NPN Current Sinking/PNP Current Sourcing	NPN/PNP Automatic Detection
OPERATING VOLTAGE	5~120V DC/AC	5~30V DC	10~28V DC	5~30V DC	
SWITCHING CURRENT	100 mA Max.	500 mA Max.	50 mA Max.	200 mA Max.	100 mA Max.
SWITCHING RATING	10 W Max.	10 W Max.	1.4 W Max.	6 W Max.	3 W Max.
CURRENT CONSUMPTION	—	10 mA Max. @ 24V	40 µA Max. @ 24V	7.5 mA Max. @ 24V	
VOLTAGE DROP	2.5V Max. @ 100mA DC	0.1V Max. @ 500mA DC	2.65V Max. @ 50mA DC	0.5 V Max. @ 200 mA DC	1 V Max. @ 200 mA DC
LEAKAGE CURRENT	—	—	90 µA Max. @ 28V	0.01 mA Max.	
INDICATOR	Red LED	Dual Yellow LED	Red LED	Red LED(Green LED)	Red LED
CABLE	2.9 ϕ, 2C, Grey Oil Resistat PUR	2.9 ϕ, 3C, Black Oil Resistat PUR	2.9 ϕ, 2C, Black Oil Resistat PUR	2.9 ϕ, 3C, Black Oil Resistat PUR	
SENSITIVITY	35 ~ 45 Gauss	35 ~ 45 Gauss	60 ~ 800 Gauss	60 ~ 800 Gauss	
SWITCHING FREQUENCY	200 Hz	200 Hz	1000 Hz	1000 Hz	
TEMPERATURE RANGE	-10 ~ 70 °C	-10 ~ 70 °C	-10 ~ 70 °C	-10 ~ 70 °C	
SHOCK	30 G	30 G	50 G	50 G	
VIBRATION	9 G	9 G	9 G	9 G	
ENCLOSURE CLASSIFICATION	IP 67 (EN60529)	IP 67 (EN60529)	IP 67 (EN60529)	IP 67 (EN60529)	
PROTECTION CIRCUIT	—		Surge Suppression	Power Reverse Polarity; Surge Suppression	
CE Certificate NO.	E8N 11 04 53334 005		No. E8N 1104 53334 004	No. E8N 1104 53334 006	—
3C Certificate NO.	No. : 2004010305127433		—	—	—
CNEx Certificate NO.	CNEx16.2333X(ExnCIICT6GC)		CNEx16. 1850 (ExiallBT6Ga)	CNEx16. 1851 (ExiallBT6Ga)	—



- NOTE: 1. The max. operating voltage of AL-37R-QD8 is 60V AC/DC (Based on IEC61076-2-101).
 2. Measuring standard target: 15.5 * 8 * 5t(Anisotropic Plastic Magnet).
 3. Sin Wave / X, Y, Z 3 Directions / 3 Times Each Direction / 11mS Each Time.
 4. Double Amplitude 1.5mm / 10Hz~55Hz~10Hz(Sweep 1min) / X, Y, Z 3 Directions / 1Hour Each Time.
 5. All trademarks used in this catalog are the property of their respective owners.
 6. We reserve the right to make changes without notice.

