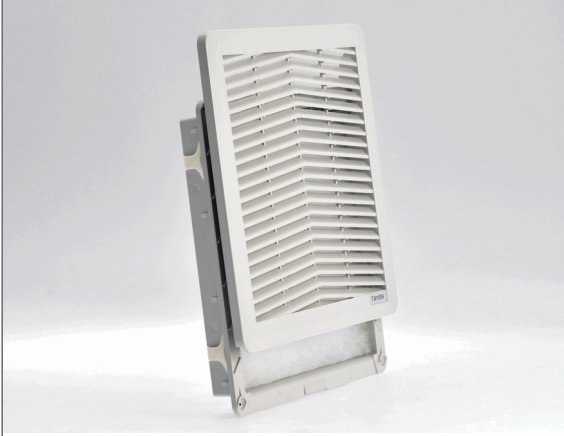


fan filters

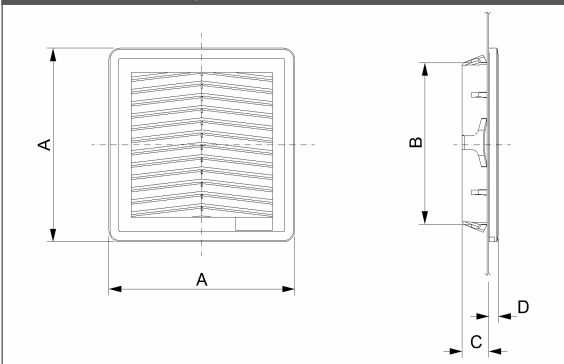
"FF" SERIES FILTER UNITS

Description: **Filter**

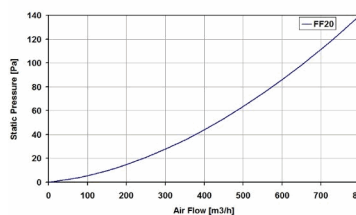
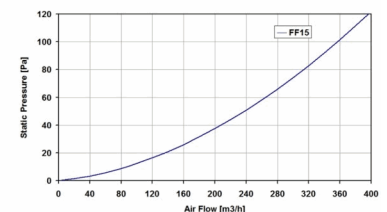
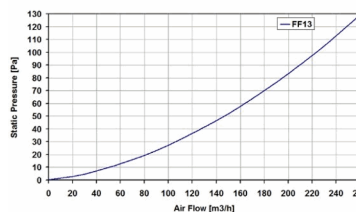
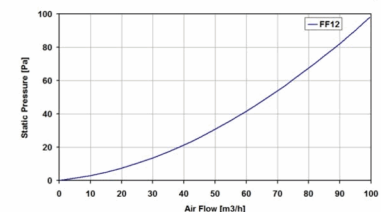
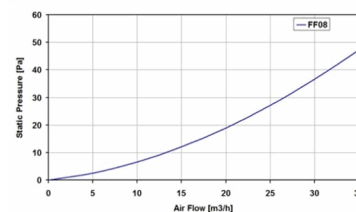
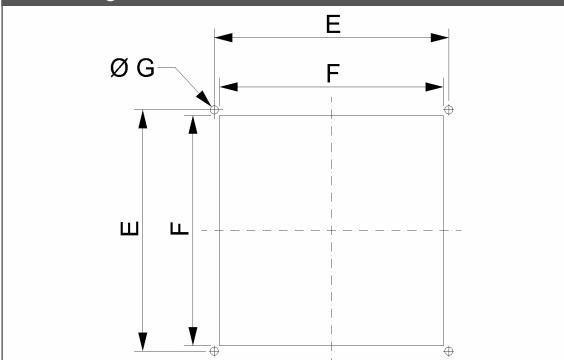


| | |
|---------------------------------|--|
| Type of material: | PC/ABS Alloy; PA 66 GF13 HSL for elastic clips |
| Standard color: | RAL 7035 - other colors on request |
| Protection degree: | IP54, according to EN 60529 std Type 12 according to UL 508 Std |
| Fixing system: | by elastic clips, otherwise by four self-threading screws |
| Plate thickness: | FF08 from 1.0 to 2.0 mm, FF12 and FF13 from 1.3 to 3.2 mm, FF15 and FF20 from 1.3 to 3.7 mm (up to 4 mm with cut-out max tolerance). |
| Rated temperature range: | from -10°C to + 60°C |
| Storage temperature: | from -40°C to + 70°C |
| Filtering class: | class G3, according to EN 779 |
| Degree of separation: | 85% - DIN 24185 |
| Dust retention capacity: | 600 g/m ² |
| Note: | filter media is washable for about 10 times |
| Approvals: | CE, UL E237844, CSA |

technical drawing



mounting cut-out



| Model | A | B | C | D | E | F | G | Cross section free without media | Weight | Approvals |
|-------|-------|------|------|------|------|-----------------------------------|------|----------------------------------|--------|-------------------|
| | (mm) | (mm) | (mm) | (mm) | (mm) | (mm) | (mm) | (cm ²) | (Kg) | |
| FF08U | 106.5 | 91.5 | 16.5 | 6.7 | 95 | 91.5 ^{+1.5} ₀ | 1.8 | 30 | 0.07 | CE; cURus; cCSAus |
| FF12U | 150 | 124 | 21.5 | 7.7 | 131 | 124 ^{+1.5} ₀ | 4.5 | 59 | 0.18 | CE; cURus; cCSAus |
| FF13U | 203.9 | 176 | 21.5 | 8 | 185 | 177 ^{+1.5} ₀ | 4.5 | 134 | 0.26 | CE; cURus; cCSAus |
| FF15U | 250 | 223 | 24.9 | 8.9 | 230 | 223 ^{+1.5} ₀ | 4.5 | 207 | 0.42 | CE; cURus; cCSAus |
| FF20U | 325 | 291 | 24.5 | 9.5 | 302 | 291 ^{+1.5} ₀ | 4.5 | 383 | 0.60 | CE; cURus; cCSAus |

data with uncertainty of 15%

All specifications, data and drawing are subject to change without notice and are approximate. Please refer to our terms of sales including our warranty and limited liabilities clauses.