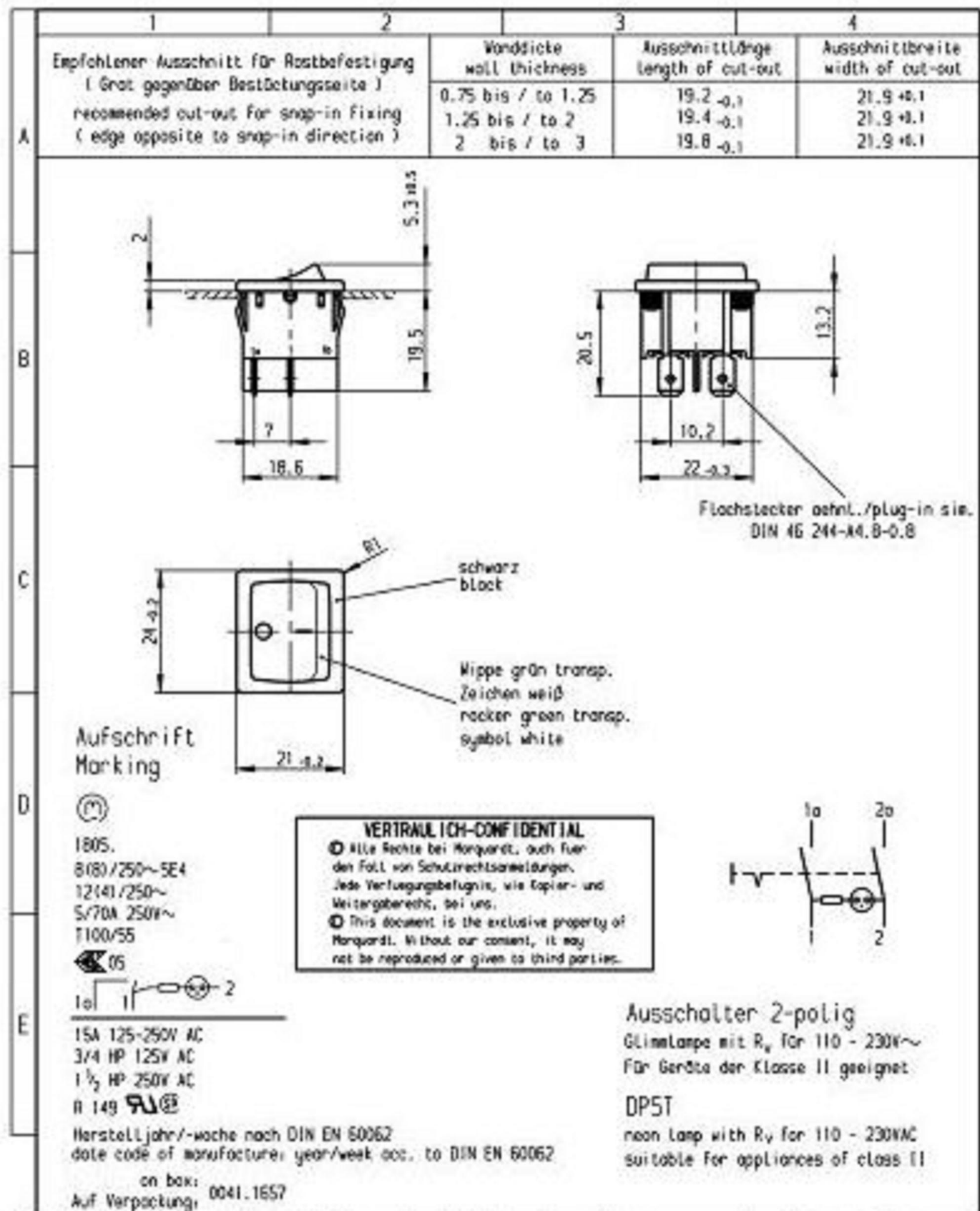


| PART NUMBER | REV | AUTH |
|-------------|-----|---------|
| 346300-401 | - | 1131366 |



Diese Unterlage ist geistiges Eigentum der Marquardt. Schutzvermerk nach DIN 34 beachten. Copyright reserved.

| | | | | | | | | | | | |
|---|-------|----------|------------------|---|--|-------------|--|------------------------------------|------------------|---------------------|--|
| Keine Intoleranzen/INTOLERANCED DIMENSIONS | | | | PROJECTION | | House COPY | | Blank SHEET | | Zeichn./DRAWING NO. | |
| Für Längen und Radien FOR LENGTHS AND RADII. | | | | Alle Dimensionen sind in Millimetern ALL DIMENSIONS ARE IN MILLIMETRES | | | | Original Maßstab DIN SCALE | | K 1805.7118 | |
| a | 0.2 | 0.4 | | Für Winkel FOR ANGLE | | 1:1 | | Geräteschalter appliance switch | | | |
| d | 62436 | 02.03.09 | vor | t 2° | | 10 20 30 mm | | MARQUARDT | | | |
| c | 46930 | 28.03.06 | vor | | | | | Herzsch. 2-7804 Fischer-Wilke | | | |
| b | 25886 | 25.03.98 | sig | | | | | | | | |
| e | 24994 | 15.05.97 | sig | | | | | | | | |
| Ausg. 1308 | | | Änderung REVISOR | | | Ausg. 1308 | | | Änderung REVISOR | | |
| 1308 | | | 1308 | | | 1308 | | | 1308 | | |

THE SYMBOLS (X), F, P, AND AMC DENOTE FEATURES CRITICAL WITH RESPECT TO SAFETY, FUNCTION, PROCESS AND ALTERNATE MEANS OF CONTROL. THESE FEATURES MUST BE CONTROLLED PER REQUIREMENTS OF THE "SUPPLIER QUALITY MANUAL" OR THE "OPERATIONS PROCESS CERTIFICATION STANDARD WORK".

| | | | | | |
|--|--|-----------------|--|--|--|
| PART(S) MUST COMPLY WITH ENGINEERING REQUIREMENT(S) T-005, C-283 | | | | A United Technologies Company INDIANAPOLIS, IN. SYRACUSE, NY. | |
| THIRD ANGLE PROJECTION UNITS METRIC mm | | | | THIS DOCUMENT AND THE INFORMATION CONTAINED THEREIN IS PROPRIETARY TO CARRIER CORPORATION AND SHALL NOT BE USED OR DISCLOSED TO OTHERS, IN WHOLE OR IN PART, WITHOUT THE WRITTEN AUTHORIZATION OF CARRIER CORPORATION. | |
| UNLESS OTHERWISE SPECIFIED DIMENSIONS TOLERANCES ARE: 0 DEC ±0 1 DEC ±0.8 2 DEC ±0.25 ANG ±1° | | | | TITLE SWITCH ON/OFF | |
| MATERIAL SEE NOTES | | | | DRAWING NO. 346300-4 | |
| 1131366 ORIG. -401 | | - PKS MJS 04/20 | | DESIGNER P. SAPPATI | |
| ECN NO. | | REVISIONS | | CREATED ON 04/09/20 | |
| - | | - | | DESIGN ENGR S. MICHAEL | |
| - | | - | | ITERATION | |
| - | | - | | ORIG ECN NO. 1131366 | |
| - | | - | | SCALE NONE | |