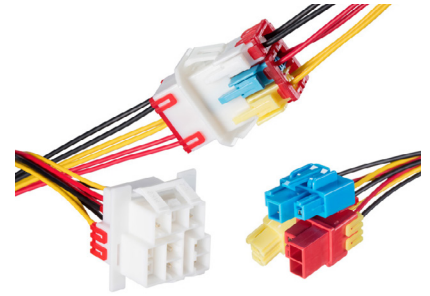


# VersaBlade Wire-to-Wire Connector System >

VersaBlade wire-to-wire connectors deliver reliable signal and power transmission at 300V and 15A with superior mating reliability, polarization and easy harness assembly. High-temperature variants support -55 to +150°C, 600V/14A max. power requirements with robust positive-locking and Terminal Position Assurance (TPA) accessory for contact reliability. Glow Wire-compliant versions ensure the safety of consumer appliance users.



VersaBlade Wire-to-Wire Connector System

## FEATURES AND ADVANTAGES

### Polarized housing and terminal dimple

Prevents incorrect connector insertion and mating

### Multi-branched wiring capabilities

Offer harness design options to reduce time and cost

### Terminals can be crimped with two wires

Enables daisy-chain connections

### Glow-wire capable housing with optional TPA accessory

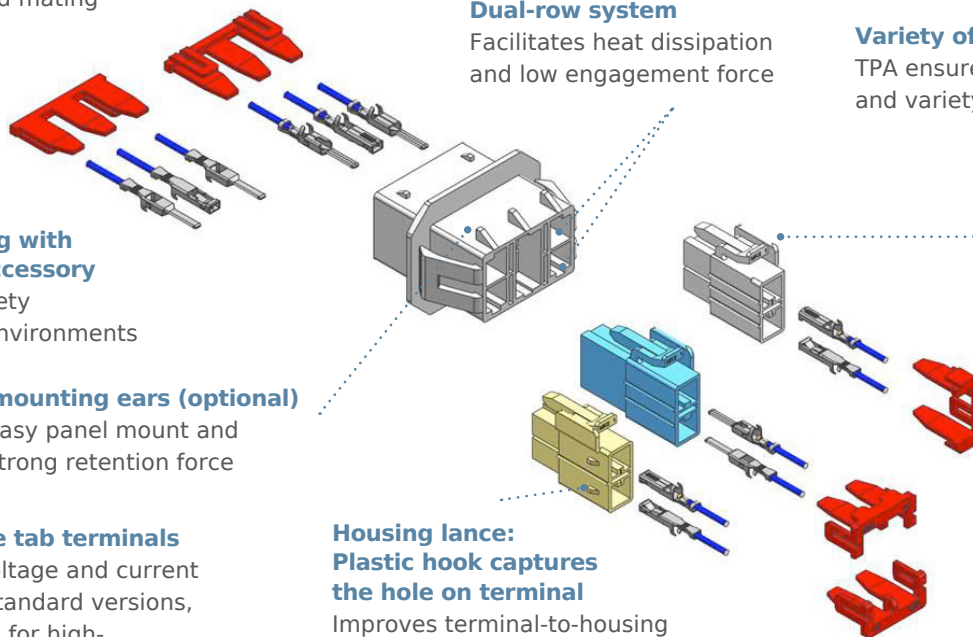
Meets global safety environmental environments

### Dual-row system

Facilitates heat dissipation and low engagement force

### Variety of TPA types

TPA ensures wires are fully inserted and variety provides design flexibility



### Friction and positive lock

Provides improved mating retention

### Snap-in mounting ears (optional)

Enables easy panel mount and ensures strong retention force

### Wide, flat-blade tab terminals

Supports high voltage and current (300V/15A) for standard versions, (600V/14A max.) for high-temperature versions

### Housing lance: Plastic hook captures the hole on terminal

Improves terminal-to-housing retention and eliminates flares or weak metal tangs

## APPLICATIONS

### Consumer / Home Appliance

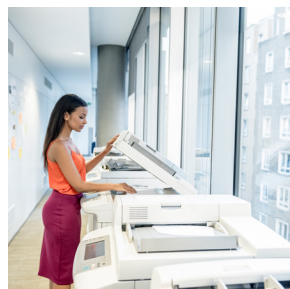
Refrigerator  
Washing Machine  
Microwave Oven  
Air Conditioner  
Air Cleaner / Dehumidifier  
Exercise Equipment  
Printers

### Data / Computing

Copiers

### Medical

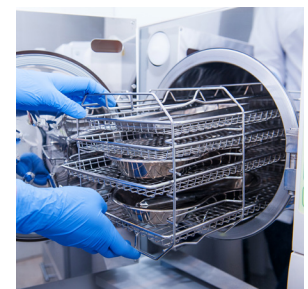
Medical equipment



Printer



Microwave Oven



Medical Equipment

# VersaBlade Wire-to-Wire Connector System >

## SPECIFICATIONS

### REFERENCE INFORMATION

Packaging:  
 Housing/TPA – Bulk  
 Terminal – Reel  
 UL File No.: E29179  
 CSA File No.: LR19980  
 RoHS: Compliant  
 Halogen Free: No  
 Glow Wire Capable: Available

### MECHANICAL

Contact Insertion Force (max.): 3.5kgf  
 Contact Retention to Housing (min.): 4.0kgf  
 Durability (max.): 30 Cycles

### ELECTRICAL

Voltage (max.):  
 300V (standard versions)  
 600V (high-temperature versions)  
 Current (max.):  
 15A (standard versions)  
 14A (high-temperature versions)  
 Contact Resistance: 10 milliohm  
 Dielectric Withstanding Voltage: No breakdown  
 Insulation Resistance: 100 megohm

### PHYSICAL

Housing:  
 Polybutylene Terephthalate (PBT) – Natural, Blue, Red  
 Polyethylene Terephthalate / Polycarbonate (PET/PC) – Natural, Blue, Yellow  
 Polyamide (PA6) - Black  
 Terminal Plating:  
 Brass – Tin (Male Terminal)  
 Phosphor Bronze – Tin (Female Terminal)  
 Operating Temperature:  
 PBT: -40 to +120°C  
 GWIT: -40 to +110°C  
 High-temperature: -55 to +150°C

## ORDERING INFORMATION

Series No.	Type	Component	Available Circuit or Wire Size
<a href="#">35150</a>	Standard housing	Standard plug housing and TPA	1, 2, 3, 4, 6 circuits
<a href="#">35151</a>		Standard receptacle housing	1, 2, 3, 4, 6 circuits
<a href="#">35180</a>	Hybrid housing	Hybrid multi-module male housing	2, 4, 6 circuits
<a href="#">35182</a>		TPA for standard male and female housing	1, 2, 3 circuits
<a href="#">35187</a>		TPA for hybrid multi-module female housing	3 circuits
<a href="#">35524</a>		Hybrid multi-module male housing	9 circuits
<a href="#">35745</a>	Terminal	Male terminal, type A	14 to 24 AWG
<a href="#">35746</a>		Female terminal, type A	14 to 24 AWG
<a href="#">35747</a>		Male terminal, type B	14 to 24 AWG
<a href="#">35748</a>		Female terminal, type B	14 to 24 AWG
<a href="#">35965</a>	TPA	Hybrid multi-module female housing and TPA	2 circuits
<a href="#">49547</a>		TPA, upper, for hybrid multi-module female housing	3 circuits
<a href="#">49548</a>		TPA, lower, for hybrid multi-module female housing	3 circuits
<a href="#">104081</a>		TPA for standard female housing	2 circuits
<a href="#">204102</a>	Hybrid housing	Hybrid multi-module male housing	2, 4, 6 circuits
<a href="#">202650</a>		Hybrid multi-module male housing	9 circuits
<a href="#">217347</a>	High temperature	Receptacle housing	2, 3, 4 circuits
<a href="#">217348</a>		Plug housing	2, 3, 4 circuits
<a href="#">2173478000</a>		Male terminal	14 to 18 AWG
<a href="#">2173488000</a>		Female terminal	14 to 18 AWG
<a href="#">217347</a>		TPA	2, 3 circuits

[www.molex.com/product/versablade.html](http://www.molex.com/product/versablade.html)